

# Boost RO

## Ultra-Radiopaque Compounds

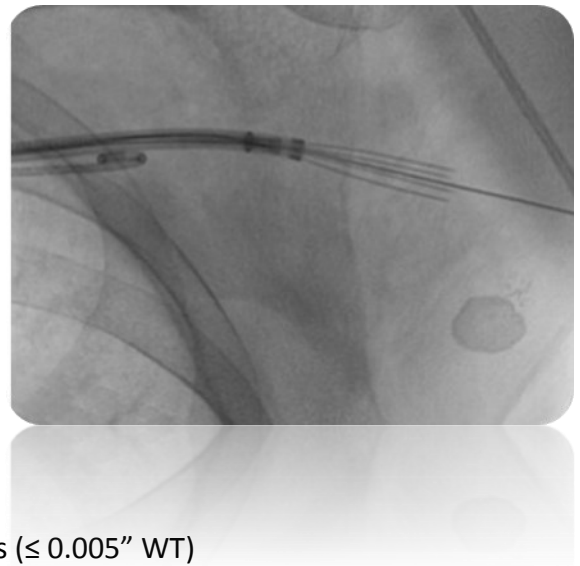
Compatible with typical catheter materials, including:

- Polyamides
- PEBA's
- HDPE
- LDPE
- LLDPE
- TPUs
- TPEs

**Boost RO** is a new proprietary radiopaque filler that can be used with typical catheter materials (see below). The Boost RO technology is mineral in nature, is biocompatible, colorable, and- when loaded at the same wt% as Barium or Bismuth- it shows up 165% and 65% (respectively) brighter under the fluoroscope.

### Major Benefits:

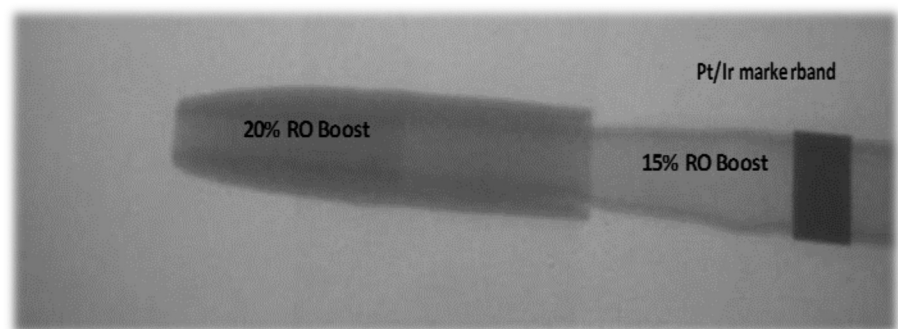
- Improved radiopacity at the same loading levels as traditional fillers
- Reduce the amount of filler needed to achieve the same radiopacity as traditional fillers
- Reduced risk of quality issues (ie. Bumps, nibs)
- Increased polymer amount in formulation aids mechanical property retention
- Increases ease of processing.
- Biocompatible (ISO 10993-5)
- Great for thin walled applications ( $\leq 0.005''$  WT)



Compounding Solutions  
258 Goddard Road  
Lewiston, ME 04240

Phone: 207-777-1122  
Fax: 207-777-1566  
info@compoundingolutions.net  
www.compoundingolutions.net

Find us on:

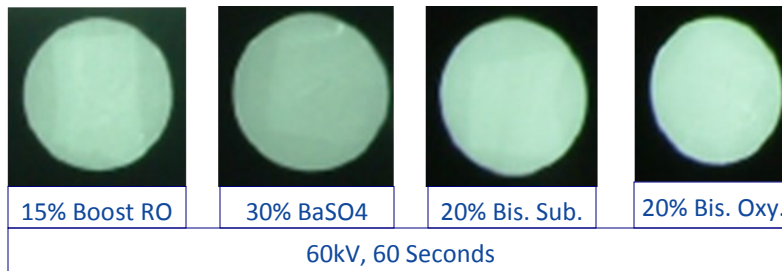


# Boost RO

	Filler	MFI (g/10 min)	Density (g/cm <sup>3</sup> )	Elastic Mod (ksi)	Yld Stress (psi)	Yld Strain (%)	UTS (psi)	Elongation @ Break
Pebax 6333 SA01 MED – Virgin	N/A	12.2 (Control)	1.0208 (Control)	26.7 (Control)	2760 (Control)	28% (Control)	6550 (Control)	490% (Control)
Pebax 6333 SA01 MED	30% / BaSO <sub>4</sub>	22.3 (+83%)	1.3063 (+28%)	36.0 (+35%)	3330 (+21%)	24% (-14%)	5250 (-20%)	450% (-8%)
Pebax 6333 SA01 MED	15% / Boost RO	17 (+40%)	1.1458 (+12%)	32.0 (+20%)	3180 (+15%)	28% (No change)	6690 (+2%)	480% (-2%)
Pellethane 2363-55D – Virgin	N/A	25.8 (Control)	1.1622 (Control)	10.0 (Control)	N/A	N/A	7670 (Control)	460% (Control)
Pellethane 2363-55D	30% / BaSO <sub>4</sub>	32.2 (+25%)	1.4807 (+27%)	15.1 (+51%)	N/A	N/A	6710 (-12.5%)	380% (-17%)
Pellethane 2363-55D	15% / Boost RO	27.7 (+7.5%)	1.3276 (+14%)	12.6 (+26%)	N/A	N/A	6800 (-11.5%)	310% (-33%)

\* (+/- x%) = % change from control

## Optical Density of Boost RO vs Standard RO Filler Loadings



Disclaimer: Compounding Solutions strictly prohibits the use of any Boost RO compounds, including medical grades, in applications that are implanted in the body or in contact with bodily fluids or tissues for greater than 30 days. Unless Compounding Solutions otherwise expressly agrees by written contract, the Compounding Solutions trademarks and the Compounding Solutions name shall not be used in conjunction with customers' medical devices, including without limitation, permanent or temporary implantable devices, and customers shall not represent to anyone else, that Compounding Solutions allows, endorses or permits the use of Compounding Solutions products in such medical devices. Further, all implantable medical devices, whether permanent or temporary, carry a risk of adverse consequences. With regard to implantable medical devices, you should not rely upon the judgment of Compounding Solutions. Any decision regarding the appropriateness of a particular medical device in a particular medical application or for a specific clinical use should be based upon the judgment of your physician, medical device supplier and the United States Food & Drug Administration and/or the European process of Medical Device notification. Unless otherwise specifically stated by Compounding Solutions in writing, Compounding Solutions does not perform clinical medical studies on implantable medical devices. Compounding Solutions cannot weigh the benefits against the risks of a device and does not offer a medical judgement on the safety or efficacy of use of any Compounding Solutions product in a medical device. The statements, technical information and recommendations contained herein are believed to be accurate as of the date hereof. Since the conditions and methods of use of the product and of the information referred to herein are beyond our control, COMPOUNDING SOLUTIONS expressly disclaims any and all liability as to any results obtained or arising from any use of the product or reliance on such information; NO WARRANTY OF FITNESS FOR ANY PARTICULAR PURPOSE, WARRANTY OF MERCHANTABILITY OR ANY OTHER WARRANTY, EXPRESSED OR IMPLIED, IS MADE CONCERNING THE GOODS DESCRIBED OR THE INFORMATION PROVIDED HEREIN. The information provided herein relates only to the specific product designated and may not be applicable when such product is used in combination with other materials or in any process. The user should thoroughly test any application before commercialization. Nothing contained herein constitutes a license to practice under any patent and it should not be construed as an inducement to infringe any patent and the user is advised to take appropriate steps to be sure that any proposed use of the product will not result in patent infringement.